

# BY CIRCELLO

Independent Gemological Appraisals  
813-927-1649



APPRAISAL # 2576

Date..... 06-10-2023  
Appraisal Type..... Insurance Replacement

**Gem**..... Natural Diamond  
Shape..... Cut Corner Square Mod. Brilliant  
Dimensions..... **6.43 x 6.39 x 4.12**

Carat Weight..... **1.50ct**  
Color Grade..... **F**  
Clarity Grade..... **SI1**

Depth%..... 64.5%  
Table%..... 77%

Polish..... Good-Very Good  
Symmetry..... Good  
Pavilion%..... 5.9%  
Crown%..... 55.4%  
Culet..... None  
Girdle..... Thin-Medium  
Fluorescence ..... None  
Comments..... EGL USA 75752802D

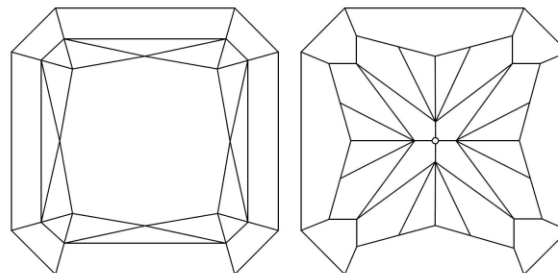
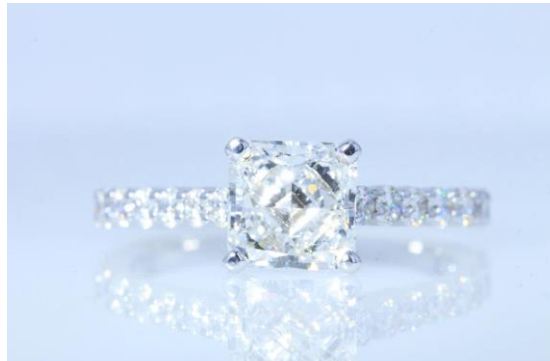
**Mounting**..... **Ring: Ladies'**  
Design..... Engagement

Metal..... 14K White, Stamped  
Weight..... 2.72 Grams  
Manufacturing..... Cast and assembled  
Finish..... High Polished  
Setting Style..... Prong set  
Condition..... Excellent

**Accent Stones**..... Diamond  
Shape and cut..... Round Full Cut  
Number of Stones..... 16  
Total Weight..... 0.53cts  
Color..... F-G  
Clarity..... VS2-SI1

**Total Gem Weight 2.03ct**

London Gold Fix..... \$ 1,957.17



Red symbols denote internal characteristics (inclusions). Green or black symbols denote external characteristics (blemishes). Diagram is an approximate representation of the diamond, and symbols shown indicate type, position and approximate size of clarity characteristics. All clarity characteristics may not be shown. Details of finish are not shown. \*(Mounted stones not plotted)

## GIA COLOR SCALE

D
E
F
G
H
I
J
K
L
M
N
O
P
Q
R
S
T
U
V
W
X
Y
Z

## GIA CLARITY SCALE

FL	
IF	
VVS1	
VVS2	
VS1	
VS2	
SI1	
SI2	
I1	
I2	
I3	

The results in this report refer only to the article described, and were obtained using the techniques and equipment available at the time of examination. This report is not a guarantee or valuation. For additional information and important limitations and disclaimers please see the reverse side of this document.

*Tamera L. Circello, D.G.*

Tamera L. Circello GG., AJP; GIA  
Gemological Institute of America

TOTAL RETAIL REPLACEMENT VALUE FOR  
INSURANCE PURPOSES: **\$ 27.25000**