



ELECTRONIC COPY

LABORATORY GROWN DIAMOND REPORT

November 11, 2022
IGI Report Number LG544247797
Description LABORATORY GROWN DIAMOND
Shape and Cutting Style ROUND BRILLIANT
Measurements 6.70 - 6.73 X 4.13 MM

GRADING RESULTS

Carat Weight 1.14 CARAT
Color Grade F
Clarity Grade SI 1
Cut Grade IDEAL

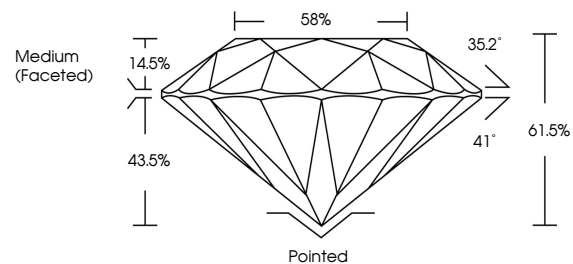
ADDITIONAL GRADING INFORMATION

Polish EXCELLENT
Symmetry EXCELLENT
Fluorescence NONE
Inscription(s) LABGROWN (IGI) LG544247797

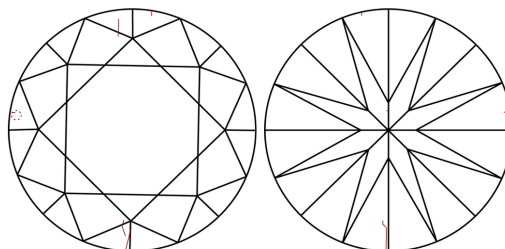
Comments: This Laboratory Grown Diamond was created by Chemical Vapor Deposition (CVD) growth process and may include post-growth treatment. Type IIa

LG544247797

PROPORTIONS



CLARITY CHARACTERISTICS

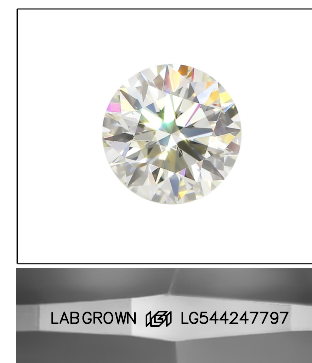


KEY TO SYMBOLS

Red symbols indicate internal characteristics.
Green symbols indicate external characteristics.

GRADING SCALES

Table with 2 rows and 5 columns showing color and clarity grading scales from CL to LT and FL to I.



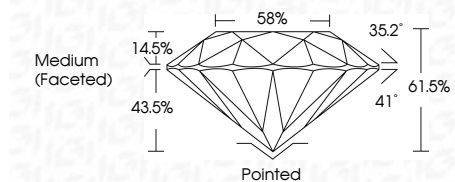
LASERSCRIBE SM

Sample Image Used

November 11, 2022
IGI Report Number LG544247797
Description LABORATORY GROWN DIAMOND
Shape and Cutting Style ROUND BRILLIANT
Measurements 6.70 - 6.73 X 4.13 MM

GRADING RESULTS

Carat Weight 1.14 CARAT
Color Grade F
Clarity Grade SI 1
Cut Grade IDEAL



ADDITIONAL GRADING INFORMATION

Polish EXCELLENT
Symmetry EXCELLENT
Fluorescence NONE
Inscription(s) LABGROWN (IGI) LG544247797

Comments: This Laboratory Grown Diamond was created by Chemical Vapor Deposition (CVD) growth process and may include post-growth treatment. Type IIa



IGI



Summary table of report details including date, report number, measurements, grading results, and additional information.