

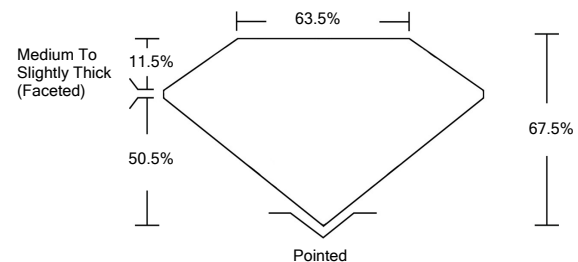


ELECTRONIC COPY

LABORATORY GROWN DIAMOND REPORT

LG508154684

PROPORTIONS



GRADING SCALES

COLOR GRADING SCALE	CL	NC	FT	VL	LT	
	COLORLESS D-F	NEAR COLORLESS G-J	FAINT K-M	VERY LIGHT N-R	LIGHT S-Z	
CLARITY (10x) GRADING SCALE	FL	IF	VVS	VS	SI	I
	FLAWLESS INTERNALLY FLAWLESS	VERY VERY SLIGHTLY INCLUDED	VERY SLIGHTLY INCLUDED	SLIGHTLY INCLUDED	INCLUDED	

January 19, 2022

IGI Report Number

LG508154684

Description

**LABORATORY GROWN
DIAMOND**

Shape and Cutting Style

CUSHION BRILLIANT

Measurements

8.62 X 7.45 X 5.03 MM

GRADING RESULTS

Carat Weight

2.51 CARATS

Color Grade

F

Clarity Grade

SI 1

January 19, 2022

IGI Report Number

LG508154684

Description

**LABORATORY GROWN
DIAMOND**

Shape and Cutting Style

CUSHION BRILLIANT

Measurements

8.62 X 7.45 X 5.03 MM

GRADING RESULTS

Carat Weight

2.51 CARATS

Color Grade

F

Clarity Grade

SI 1

ADDITIONAL GRADING INFORMATION

Polish

EXCELLENT

Symmetry

EXCELLENT

Fluorescence

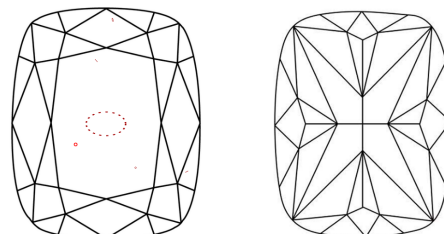
NONE

Inscription(s)

LABGROWN IGI LG508154684

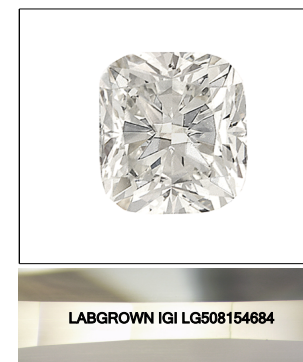
Comments: This Laboratory Grown Diamond was created by Chemical Vapor Deposition (CVD) growth process and may include post-growth treatment.
Type IIa

CLARITY CHARACTERISTICS



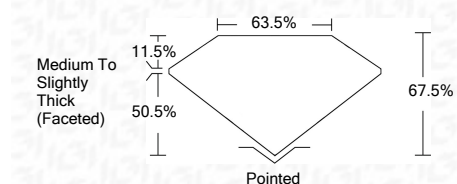
KEY TO SYMBOLS

Red symbols indicate internal characteristics.
Green symbols indicate external characteristics.



LASERSCRIBESM

Sample Image Used



ADDITIONAL GRADING INFORMATION

Polish

EXCELLENT

Symmetry

EXCELLENT

Fluorescence

NONE

Inscription(s)

LABGROWN IGI LG508154684

Comments: This Laboratory Grown Diamond was created by Chemical Vapor Deposition (CVD) growth process and may include post-growth treatment.
Type IIa

January 19, 2022
IGI Report No. LG508154684
CUSHION BRILLIANT
8.62 X 7.45 X 5.03 MM
Carat Weight
2.51 CARATS
Color Grade
F
Clarity Grade
SI 1
Depth
67.5%
Table
63.5%
Girdle
Medium To Slightly Thick (Faceted)
Culet
Pointed
Polish
EXCELLENT
Symmetry
EXCELLENT
Fluorescence
NONE
Inscription(s)
LABGROWN IGI LG508154684
Comments:
This Laboratory Grown Diamond was created by Chemical Vapor Deposition (CVD) growth process and may include post-growth treatment.
Type IIa